

# Climate and Community: Understanding Environmental Change - Level 3

## **Section 2: Climate Change and Human Societies**

This section of the course explores the multifaceted relationship between climate change and human societies. It delves into the social, economic, and cultural impacts of climate change, as well as how communities can respond, adapt, and transform in the face of these challenges. The section also discusses the role of policy, innovation, and education in addressing climate-related issues.

### **2.1 Social Impacts of Climate Change**

Climate change has profound and far-reaching social implications. It threatens to exacerbate existing inequalities within and between societies. Vulnerable populations, including those with low incomes, the elderly, and marginalized groups, are often the most affected by the consequences of a changing climate. These consequences can include:

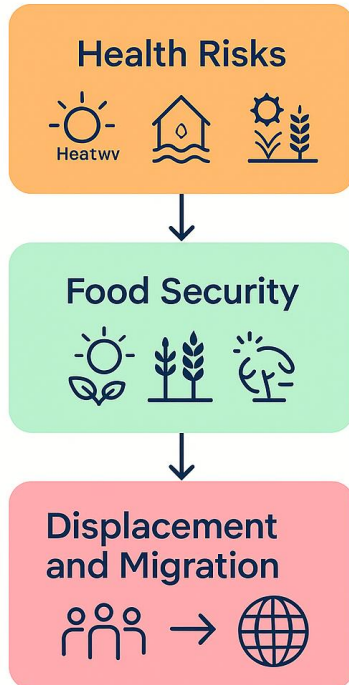
#### **Health Risks**

Increased frequencies of heatwaves, floods, and storms can lead to direct health impacts, including heat stress, injuries, and water-borne diseases. Changes in climate patterns can also indirectly affect health by altering the distribution of vector-borne diseases like malaria.

#### **Food Security**

Changes in temperature and precipitation patterns can disrupt agricultural production, leading to food shortages and increased food prices. This can have a ripple effect, causing malnutrition and undermining the livelihoods of those who depend on farming.

## Social Impacts of Climate Change



### Displacement and Migration

Extreme weather events and gradual environmental degradation can lead to displacement and forced migration, as people move in search of more hospitable living conditions. This can lead to social tension and conflict in receiving areas.

## 2.2 Economic Implications of Climate Change

The economic ramifications of climate change are both immediate and long-term. These include:

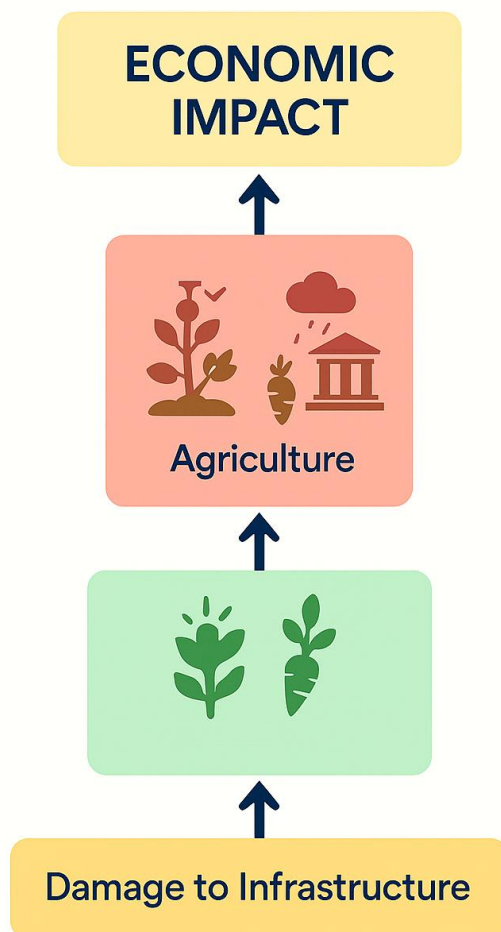
### Damage to Infrastructure

Flooding, storms, and sea-level rise can cause significant damage to buildings, roads, and utilities, requiring costly repairs and adaptation measures.

### Agricultural and Fisheries Disruption

As mentioned in the social impacts, disruptions to agriculture and fisheries affect not only food availability but also the economies dependent on these sectors.

## Economic Implications of Climate Change



Regions that rely on tourism may suffer as climate change affects natural attractions and increases the frequency of extreme weather events, deterring visitors.

### **Costs and Investments**

Governments and businesses must invest in adaptation and mitigation strategies to protect assets and communities, which can be a significant economic burden.

## **2.3 Cultural Effects of Climate Change**

Climate change can also have cultural consequences, impacting communities' ways of life, traditions, and heritage:

### **Loss of Indigenous Knowledge**

Indigenous communities often have a deep connection to their environment. Changes to ecosystems can erode their ability to maintain traditional practices and erode their cultural identity.

### **Heritage Sites at Risk**

Rising sea levels, coastal erosion, and other climate-related phenomena threaten historical sites and cultural landmarks, leading to the loss of valuable heritage.

## 2.4 Community Responses to Climate Change

Communities around the world are finding innovative ways to respond to the impacts of climate change:

### Local Adaptation Plans

Communities are developing local adaptation plans that focus on enhancing resilience to climate impacts through infrastructure improvements, sustainable land management, and emergency preparedness.

### Community-Based Renewable Energy

Investment in local renewable energy projects, such as solar panels and wind turbines, not only reduces greenhouse gas emissions but also creates jobs and fosters energy independence.

### Sustainable Agriculture Practices

Transitioning to sustainable agriculture practices, such as agroforestry or organic farming, can help communities adapt to changing conditions while preserving the environment.

# Climate Change



Government policies at various levels play a crucial role in shaping the response to climate change:

### **Climate Legislation**

National laws and regulations, such as the UK's Climate Change Act 2008, set targets for emissions reductions and establish frameworks for adaptation.

### **Incentives for Green Technology**

Governments can encourage innovation by providing incentives for the development and adoption of green technologies, such as electric vehicles and energy-efficient appliances.

### **International Agreements**

Participation in international agreements, such as the Paris Agreement, commits countries to global efforts to limit temperature rises and supports international cooperation.

## **2.6 Education and Public Awareness**

Raising awareness and understanding of climate change is essential to foster a society that is informed and ready to take action:

### **Climate Education in Schools**

Integrating climate change into the curriculum can ensure that young people grow up with an understanding of the issue and its implications.

### **Public Information Campaigns**

Government and non-governmental organizations can run campaigns to inform the public about climate change and promote behaviors that reduce emissions and waste.

### **Community Workshops and Training**

Providing local workshops and training can equip community members with the skills to implement adaptation and mitigation strategies.

## 2.7 Moving Towards a Sustainable Future

The transition to a sustainable future requires collective action and a shift in societal values:

### Circular Economy

Adopting a circular economy model, where resource use is minimized, and waste is repurposed, can help reduce environmental impact.

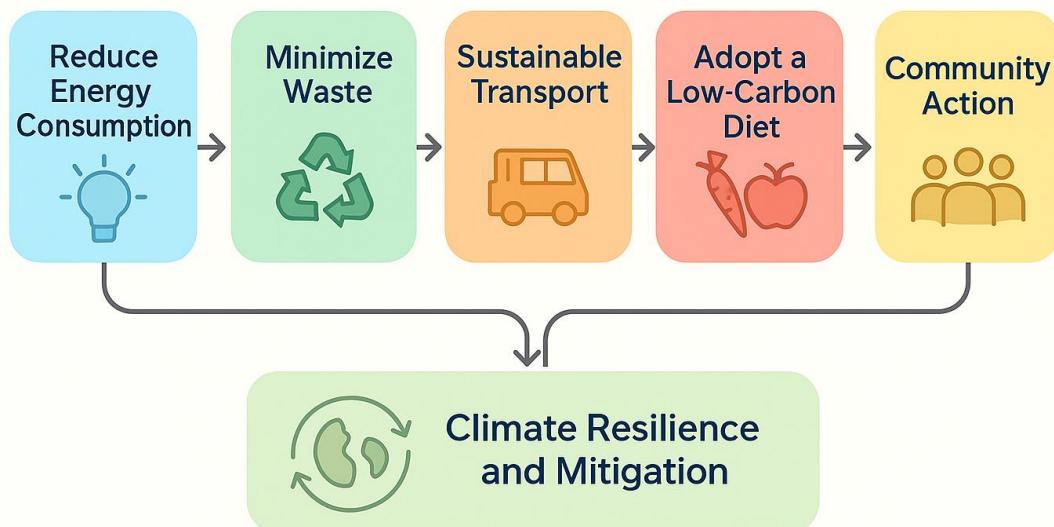
### Sustainable Urban Planning

Designing cities to be more sustainable, with green spaces, efficient public transport, and sustainable housing, can improve residents' quality of life and reduce carbon footprints.

### Behavioural Change

Encouraging individuals to adopt more sustainable behaviors, such as reducing meat consumption, conserving water, and minimizing car travel, can contribute to wider environmental benefits.

## Encouraging Behavioural Changes for Climate Action



Climate change is not only an environmental issue but also a complex social, economic, and cultural challenge. By understanding these dimensions and the potential responses, communities can become proactive agents of change. This section has highlighted the transformative potential of local initiatives, policy support, innovation, and education in fostering resilience and sustainability in the face of climate change. Moving forward, the next sections of this course will delve into specific case studies and provide practical guidance on how communities can implement the strategies discussed here.

**1. Which of the following is a direct health impact of climate change due to increased frequencies of natural disasters?**

- A. Food shortages
- B. Displacement and migration
- C. Heat stress
- D. Loss of indigenous knowledge

**2. What is one of the economic implications of climate change that affects both food availability and the economy?**

- A. Damage to infrastructure
- B. Health risks
- C. Tourism industry
- D. Agricultural and Fisheries Disruption

**3. Which community response to climate change focuses on enhancing resilience through sustainable land management and emergency preparedness?**

- A. Community-Based Renewable Energy
- B. Local Adaptation Plans
- C. Sustainable Urban Planning
- D. Incentives for Green Technology

**4. How does climate change threaten cultural aspects of communities?**

- A. By necessitating investments in green technology
- B. Through the erosion of traditional practices and cultural identity
- C. By integrating climate education into the curriculum
- D. Via the implementation of circular economy models

**5. Which international agreement is mentioned in the course material as a commitment by countries to global efforts to limit temperature rises?**

- A. The UK's Climate Change Act 2008
- B. Incentives for the development of electric vehicles
- C. The Paris Agreement
- D. Community workshops and training

**Answers:**

**1. Which of the following is a direct health impact of climate change due to increased frequencies of natural disasters?**

C. Heat stress

**2. What is one of the economic implications of climate change that affects both food availability and the economy?**

D. Agricultural and Fisheries Disruption

**3. Which community response to climate change focuses on enhancing resilience through sustainable land management and emergency preparedness?**

B. Local Adaptation Plans

**4. How does climate change threaten cultural aspects of communities?**

B. Through the erosion of traditional practices and cultural identity

**5. Which international agreement is mentioned in the course material as a commitment by countries to global efforts to limit temperature rises?**

C. The Paris Agreement